



THE SPRUCE CLAYTON



THE SPRUCE CLAYTON Model number:

3 beds • 2 baths • 1458 sq.ft. • 28' width • 56' depth

Our home building facilities invest in continuous product and process improvements. Plans, dimensions, features, materials, specifications and availability are subject to change without notice or obligation. Renderings and floor plans are representative likenesses of our homes and may differ from the actual homes. We invite you to tour a Home Center near you and inspect the highest value in quality housing available or call (360) 438-0246 to speak with a Home Consultant. Copyright 2017, CMH. All rights reserved.

<https://www.laceyclayton.com>

CLAYTON HOMES-LACEY

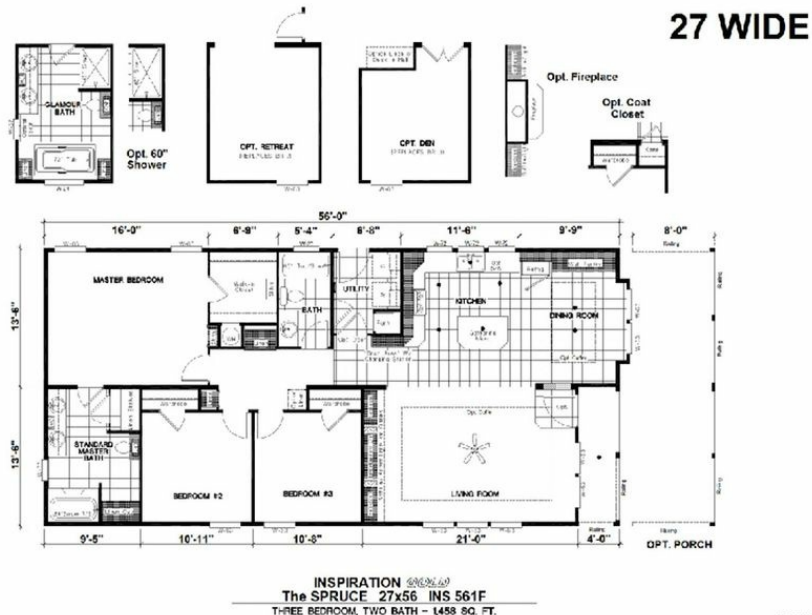
6312 MARTIN WAY
LACEY, WA 98516

Monday - Thursday: 10am - 5:30pm
Friday: 10am - 5:30pm
Saturday: 10am - 5:30pm
Sunday: Closed

(360) 438-0246



THE SPRUCE CLAYTON



THE SPRUCE CLAYTON Model number:

3 beds • 2 baths • 1458 sq.ft. • 28' width • 56' depth

Our home building facilities invest in continuous product and process improvements. Plans, dimensions, features, materials, specifications and availability are subject to change without notice or obligation. Renderings and floor plans are representative likenesses of our homes and may differ from the actual homes. We invite you to tour a Home Center near you and inspect the highest value in quality housing available or call (360) 438-0246 to speak with a Home Consultant. Copyright 2017, CMH. All rights reserved.

<https://www.laceyclayton.com>

CLAYTON HOMES-LACEY

6312 MARTIN WAY
LACEY, WA 98516

Monday - Thursday: 10am - 5:30pm
Friday: 10am - 5:30pm
Saturday: 10am - 5:30pm
Sunday: Closed

(360) 438-0246