



9585S MCKINLEY



**9585S MCKINLEY** Model number:

**3 beds • 2 baths • 2774 sq.ft. • 40' width • 70' depth**

Our home building facilities invest in continuous product and process improvements. Plans, dimensions, features, materials, specifications and availability are subject to change without notice or obligation. Renderings and floor plans are representative likenesses of our homes and may differ from the actual homes. We invite you to tour a Home Center near you and inspect the highest value in quality housing available or call (360) 438-0246 to speak with a Home Consultant. Copyright 2017, CMH. All rights reserved.

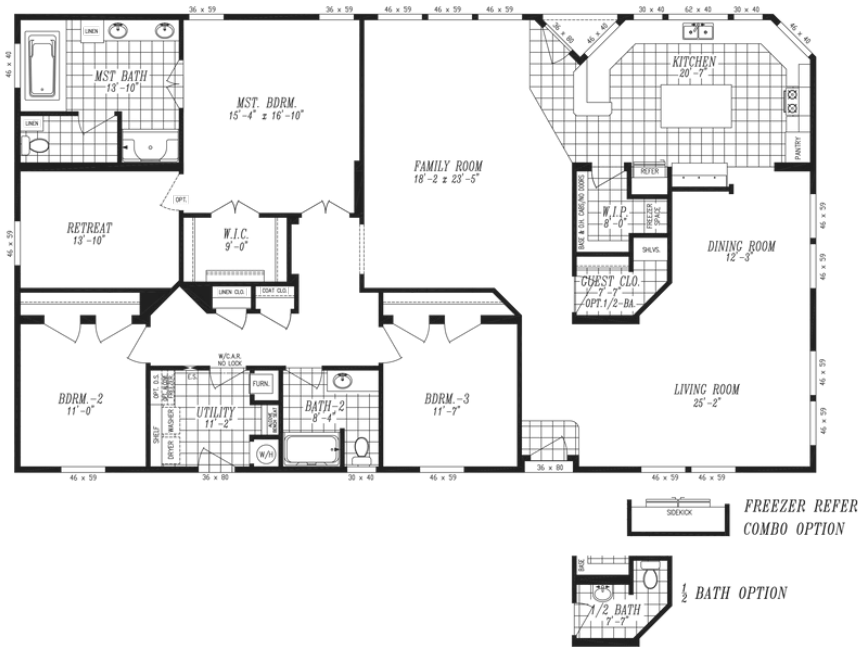
<https://www.laceyclayton.com>

**CLAYTON HOMES-LACEY**

6312 MARTIN WAY  
LACEY, WA 98516

Monday - Thursday: 10am - 5:30pm  
Friday: 10am - 5:30pm  
Saturday: 10am - 5:30pm  
Sunday: Closed

(360) 438-0246



## 9585S MCKINLEY Model number:

**3 beds • 2 baths • 2774 sq.ft. • 40' width • 70' depth**

Our home building facilities invest in continuous product and process improvements. Plans, dimensions, features, materials, specifications and availability are subject to change without notice or obligation. Renderings and floor plans are representative likenesses of our homes and may differ from the actual homes. We invite you to tour a Home Center near you and inspect the highest value in quality housing available or call (360) 438-0246 to speak with a Home Consultant. Copyright 2017, CMH. All rights reserved.

<https://www.laceyclayton.com>

### CLAYTON HOMES-LACEY

6312 MARTIN WAY  
LACEY, WA 98516

Monday - Thursday: 10am - 5:30pm  
Friday: 10am - 5:30pm  
Saturday: 10am - 5:30pm  
Sunday: Closed

(360) 438-0246