



## CP441F - CLAYTON PREFERRED



### CP441F - CLAYTON PREFERRED

Model number: 72QLV28443AH17

**3 beds • 2 baths • 1188 sq.ft. • 27' width • 44' depth**

Our home building facilities invest in continuous product and process improvements. Plans, dimensions, features, materials, specifications and availability are subject to change without notice or obligation. Renderings and floor plans are representative likenesses of our homes and may differ from the actual homes. We invite you to tour a Home Center near you and inspect the highest value in quality housing available or call (360) 438-0246 to speak with a Home Consultant. Copyright 2017, CMH. All rights reserved.

<https://www.laceyclayton.com>

### CLAYTON HOMES-LACEY

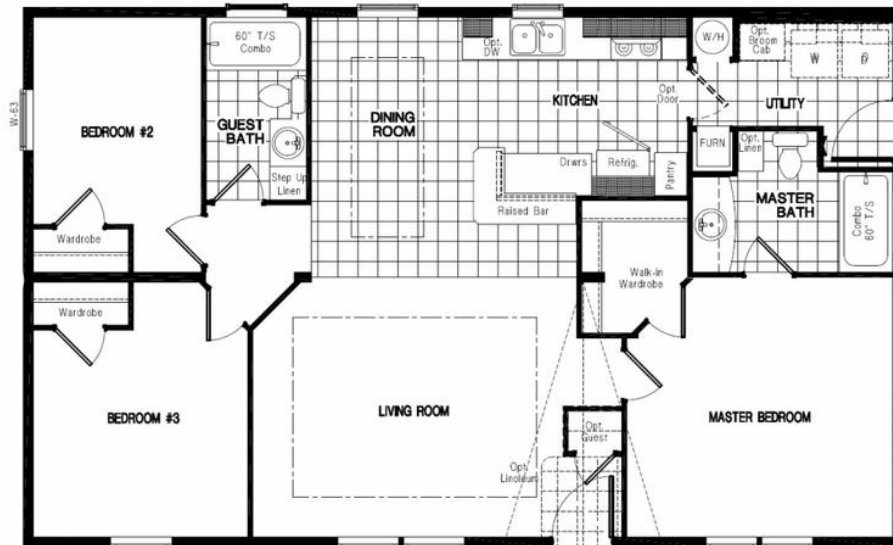
6312 MARTIN WAY  
LACEY, WA 98516

Monday - Thursday: 10am - 5:30pm  
Friday: 10am - 5:30pm  
Saturday: 10am - 5:30pm  
Sunday: Closed

(360) 438-0246



## CP441F - CLAYTON PREFERRED



### CP441F - CLAYTON PREFERRED

Model number: 72QLV28443AH17

3 beds • 2 baths • 1188 sq.ft. • 27' width • 44' depth

Our home building facilities invest in continuous product and process improvements. Plans, dimensions, features, materials, specifications and availability are subject to change without notice or obligation. Renderings and floor plans are representative likenesses of our homes and may differ from the actual homes. We invite you to tour a Home Center near you and inspect the highest value in quality housing available or call (360) 438-0246 to speak with a Home Consultant. Copyright 2017, CMH. All rights reserved.

<https://www.laceyclayton.com>

#### CLAYTON HOMES-LACEY

6312 MARTIN WAY  
LACEY, WA 98516

Monday - Thursday: 10am - 5:30pm  
Friday: 10am - 5:30pm  
Saturday: 10am - 5:30pm  
Sunday: Closed

(360) 438-0246